

WILBUR WRIGHT ELEMENTARY

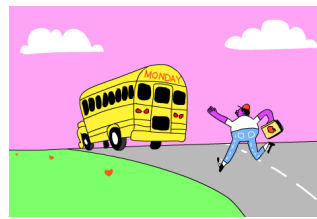
www.ncweb.me/wilburwright/



SCHOOL ATTENDANCE

THE FOLLOWING CLASSES REACHED 94% ATTENDANCE RATE FOR THEIR CLASSES AND ARE BEING RECOGNIZED FOR EXCELLENT ATTENDANCE LAST WEEK:

- Mrs. Swoveland (Kindergarten) 94%
- Mrs. Bishop (Kindergarten) 96%
- Mrs. Wilson (1st Grade) 96%
- Miss Bryant (1st Grade) 95%
- Miss Taylor (4th Grade) 100%
- Miss Cook (5th Grade) 95%
- Mrs. Dye (5th Grade) 100%
- Mrs. Thomas (4th Grade) 97%
- Mrs. Miller- (Preschool) 94%



SCHOOL PICTURES

SCHOOL PICTURES WILL BE TAKEN ON AUGUST 29TH. INFORMATION SPECIFIC TO EACH STUDENT WAS SENT HOME. PLEASE CONTACT THE OFFICE IF YOU HAVE QUESTIONS.

LATE TO SCHOOL

STUDENTS WHO ARE LATE GETTING TO SCHOOL MUST BE SIGNED IN BY A PARENT/FAMILY MEMBER UPON ARRIVAL. PLEASE BE SURE TO SIGN YOUR STUDENT IN AT THE OFFICE IF YOU ARE RUNNING LATE.

PTO NEEDS YOU

WILBUR WRIGHT PTO IS PLANNING THE SCHOOL'S FALL FESTIVAL. PLEASE PLAN ON JOINING THE NEXT MEETING WHICH WILL BE SEPTEMBER 21ST AT 5:30PM IN THE SCHOOL LIBRARY. YOUR PARTICIPATION IS APPRECIATED.

- AUG. 23—VIOLIN CLUB AFTER SCHOOL
- AUG. 30—VIOLIN CLUB AFTER SCHOOL
- AUG. 29—SCHOOL PICTURES
- SEPT. 4—LABOR DAY/NO SCHOOL
- SEPT. 6—MID TERMS
- SEPT. 6—VIOLIN CLUB
- SEPT. 13—VIOLIN CLUB
- SEPT. 14—FOOD PANTRY 3:15PM TO 4:00PM
- SEPT. 20—VIOLIN CLUB
- SEPT. 21—PTO MEETING @ 5:30PM
- SEPT 27—ELEARNING DAY/PARENT CONFERENCES
- OCT. 4—SKATING PARTY 6PM TO 8PM @ THE RINK
- OCT. 6—MID TERMS
- OCT. 14—FOOD PANTRY 3:15PM TO 4:00PM



STUDENTS ARE TARDY AFTER 8:00 A.M. PLEASE BE ON TIME TO SCHOOL!